

PERIMETER

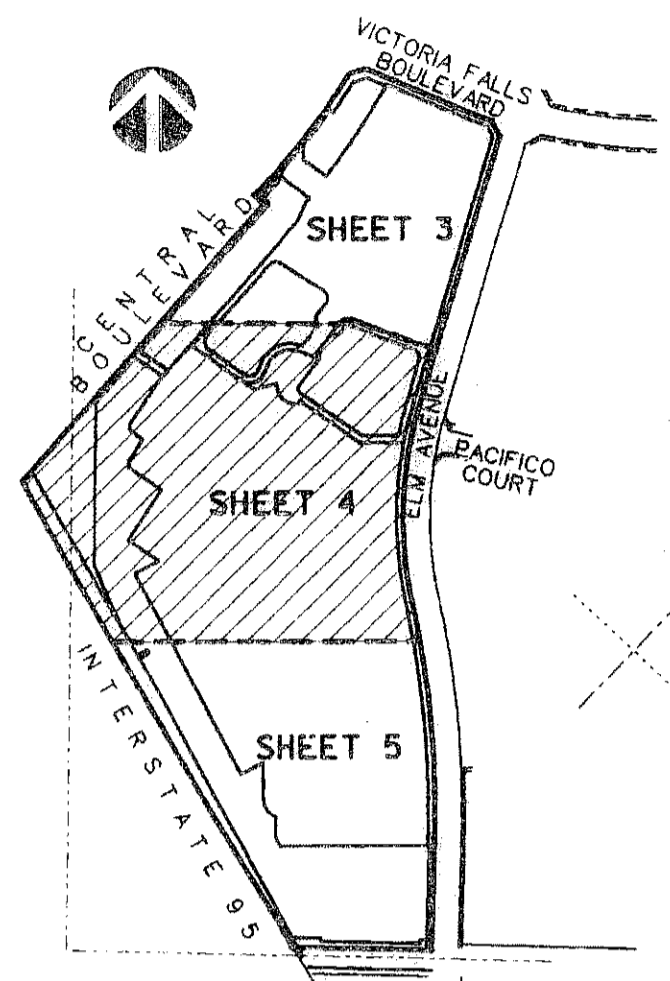
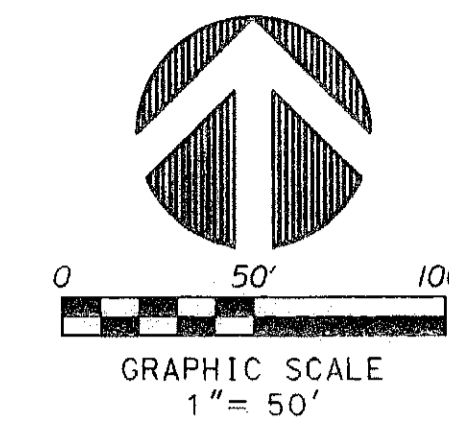
SURVEYING & MAPPING
 Certificate of Authorization No. LB7264
 Prepared by: Jeff S. Hodapp, P.S.M.
 951 Broken Sound Parkway, Suite 320
 Boca Raton, Florida 33487
 Tel: (561) 241-9988
 Fax: (561) 241-5182

CIMARRON COVE

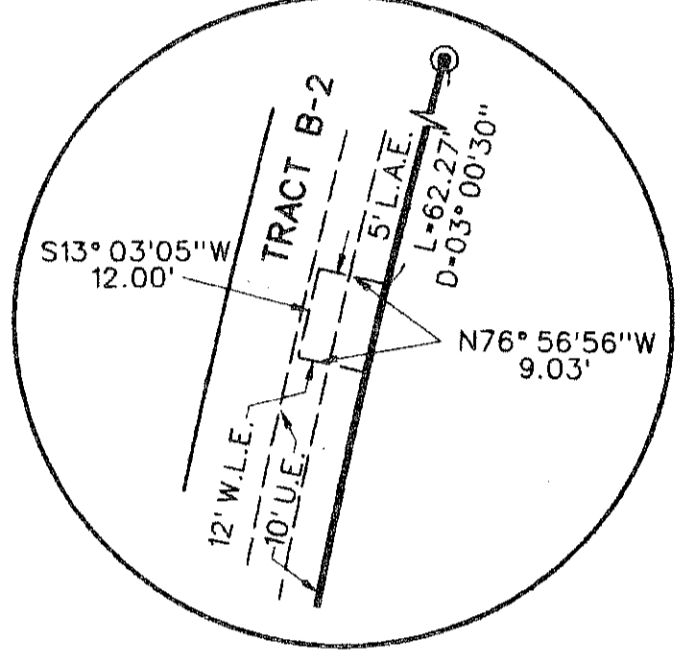
A PORTION OF THE SOUTHEAST ONE-QUARTER OF SECTION 35, AND THE WEST ONE-HALF OF SECTION 36, TOWNSHIP 41 SOUTH, RANGE 42 EAST, PALM BEACH GARDENS, PALM BEACH COUNTY, FLORIDA.

JANUARY, 2008

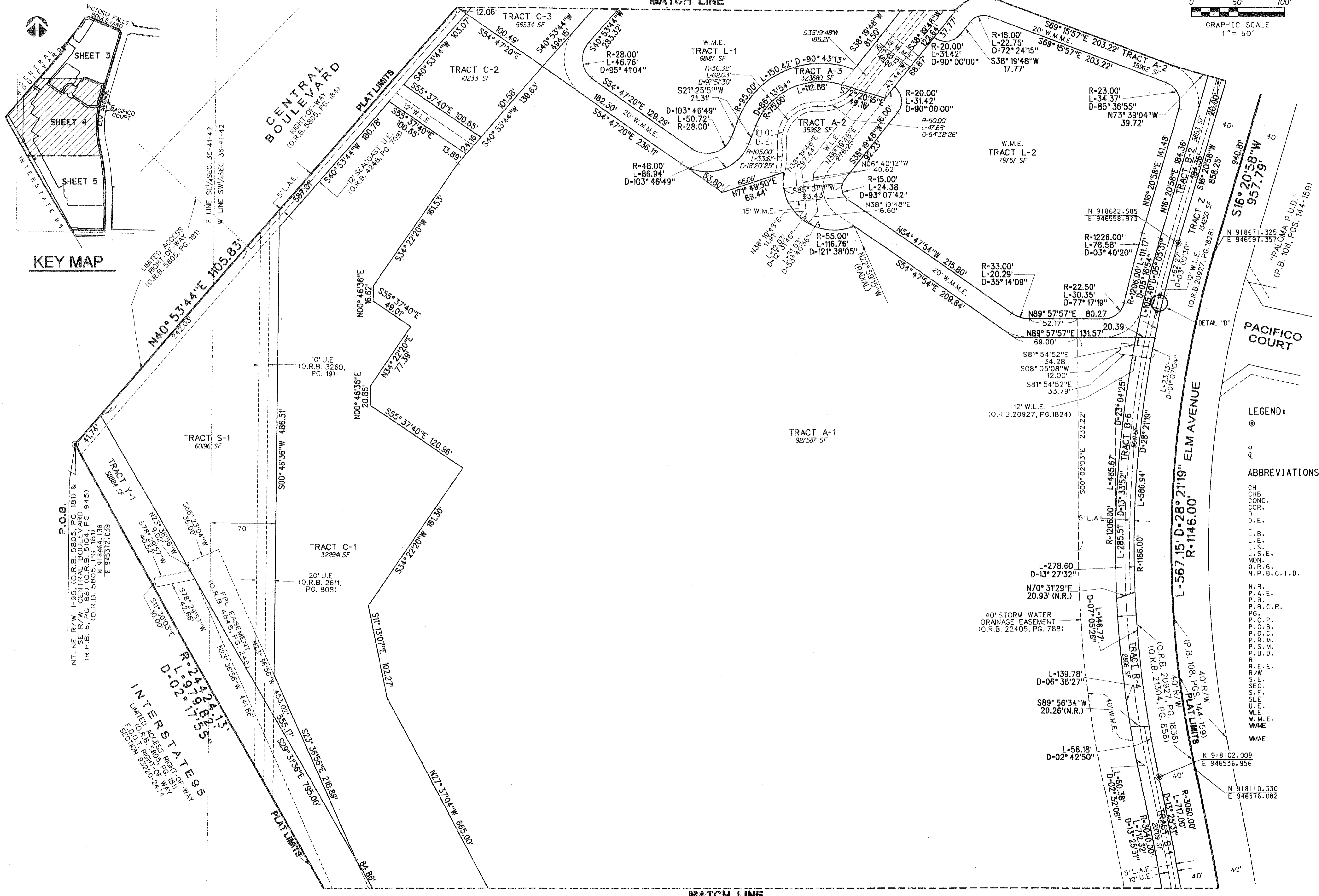
SEE SHEET 3
MATCH LINE



KEY MAP



DETAIL "D"



LEGEND:

ABBREVIATIONS:

- CH CHORD BEARING
- CHB CONCRETE
- CONC. CONCRETE
- COR. CORNER
- Δ DELTA (CENTRAL ANGLE)
- D.E. DRAINAGE EASEMENT
- AR. LENGTH
- L.B. LICENSED BUSINESS
- L.E. LANDSCAPE EASEMENT
- L.S. LICENSED SURVEYOR
- L.S.E. LIFT STATION EASEMENT
- MON. MONUMENT
- O.R.B. OFFICIAL RECORDS BOOK
- N.P.B.C.I.D. NORTHERN PALM BEACH COUNTY IMPROVEMENT DISTRICT
- N.R. NON-RADIAL
- P.A.E. PEDESTRIAN ACCESS EASEMENT
- P.B. PLAT BOOK
- P.B.C.R. PALM BEACH COUNTY RECORDS
- PAGE PAGE
- P.C.P. PERMANENT CONTROL POINT
- P.O.B. POINT OF BEGINNING
- P.O.C. POINT OF COMMENCEMENT
- P.R.M. PERMANENT REFERENCE MONUMENT
- P.S.M. PROFESSIONAL SURVEYOR & MAPPER
- P.U.D. PLANNED UNIT DEVELOPMENT
- R. RADIUS
- R.E.E. ROOF ENCROACHMENT EASEMENT
- R/W RIGHT-OF-WAY
- S.E. SIDEWALK EASEMENT
- SEC. SECTION
- S.F. SQUARE FEET
- SLE SEWER LINE EASEMENT
- U.E. UTILITY EASEMENT
- W.L.E. WATER LINE EASEMENT
- W.M.E. WATER MANAGEMENT EASEMENT
- W.M.M. WATER MANAGEMENT
- WMAE WATER MANAGEMENT ACCESS EASEMENT

SET P.R.M. (UNLESS OTHERWISE NOTED) 4" X 4" CONC. MON. WITH ALUMINUM DISK STAMPED P.R.M. LB7264 SET P.C.P. LB7264 CENTERLINE

MATCH LINE
SEE SHEET 5